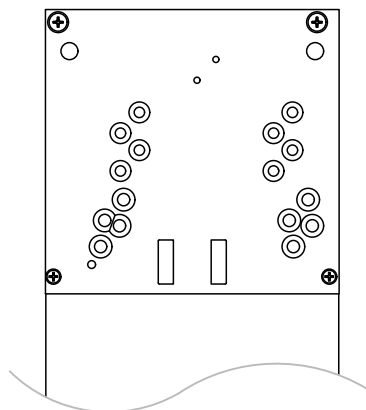
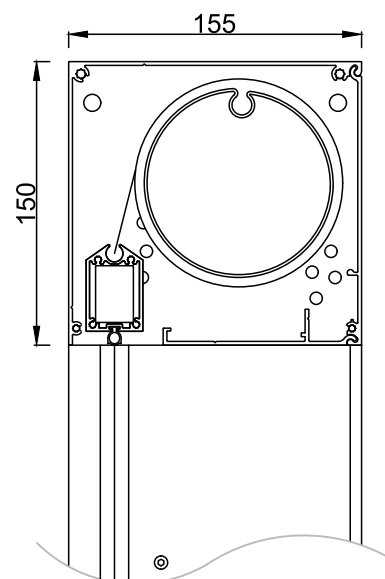


Zij aanzicht  
Vue de côté  
Side view  
Seitenansicht

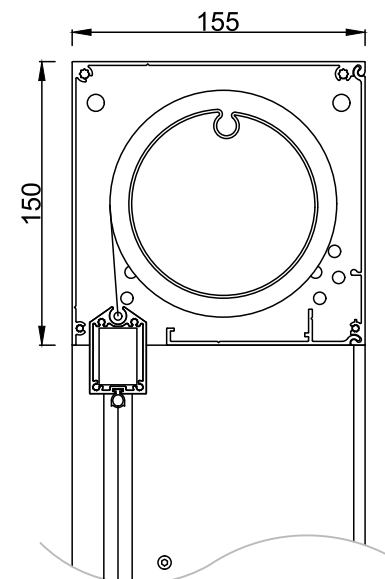


Doorsnede  
Section  
Cross section  
Querschnitt



$H \leq 2800 \text{ mm}$

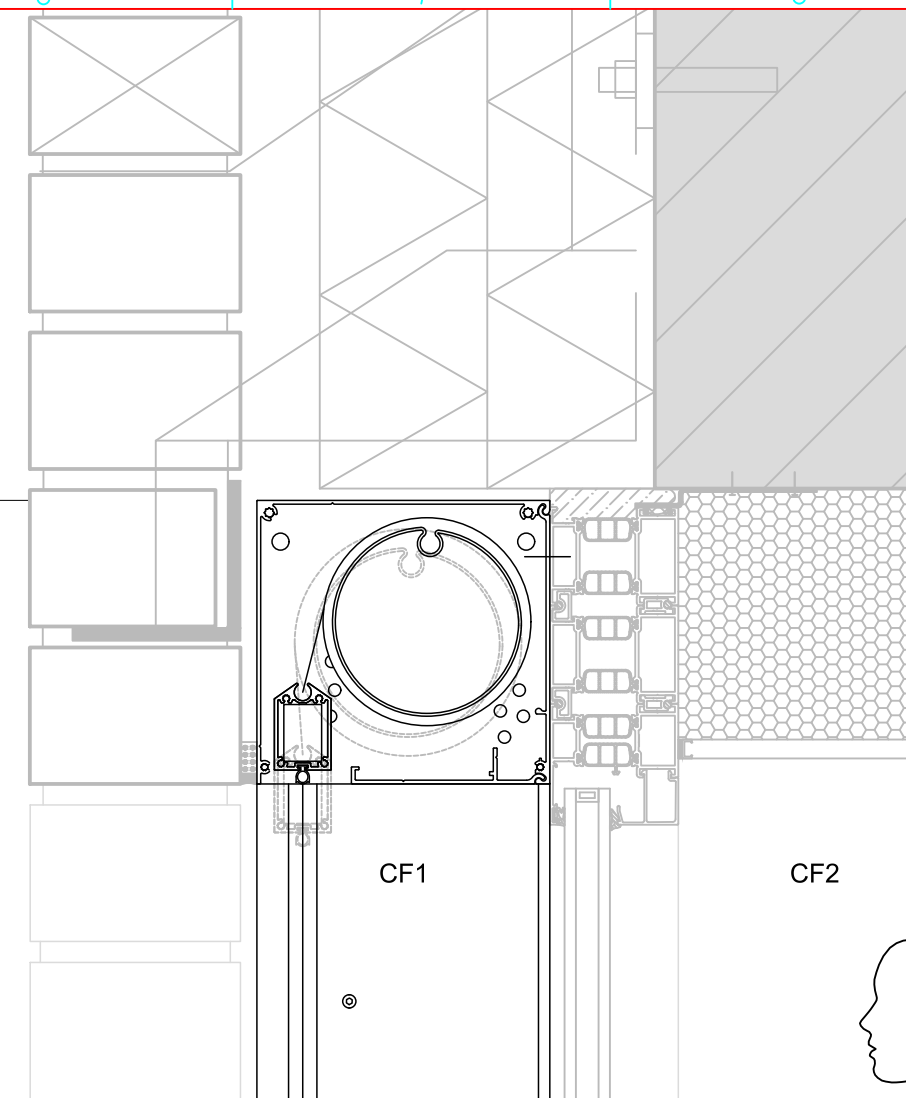
- Onderlat past volledig in de kast
- La barre de charge disparaît dans le caisson complètement
- Bottom rail disappears into the box completely
- Endschiene passt vollständig in die Kassette



$2800 \text{ mm} < H \leq 6000 \text{ mm}$

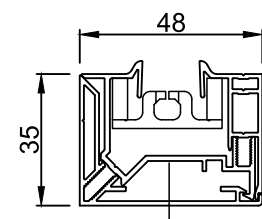
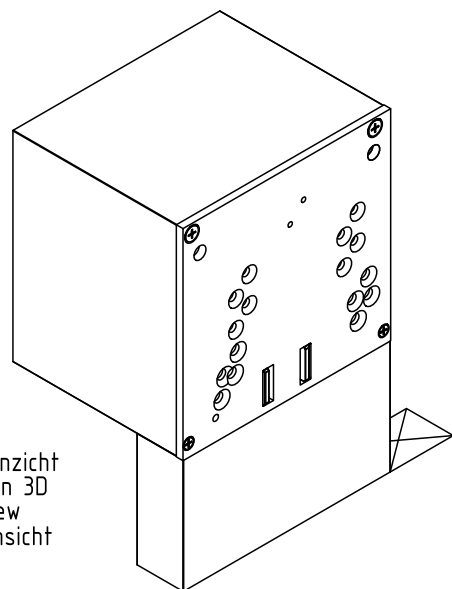
- Onderlat past gedeeltelijk in de kast
- La barre de charge disparaît dans le caisson partiellement
- Bottom rail disappears into the box partially
- Endschiene passt in die Kassette teilweise

Verticale snede  
Section verticale  
Vertical cross section  
Vertikaler Schnitt

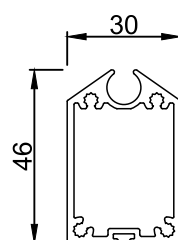


Afgewerkte hoogte  
Hauteur finie  
Finished height  
Fertige Höhe

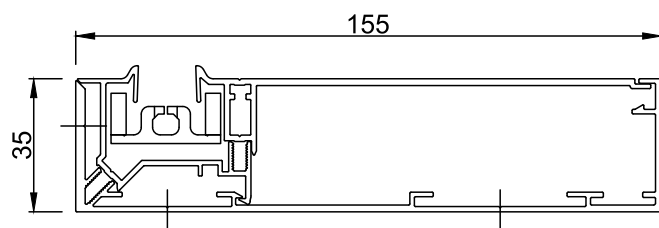
3D aanzicht  
Vue en 3D  
3D-view  
3D-Ansicht



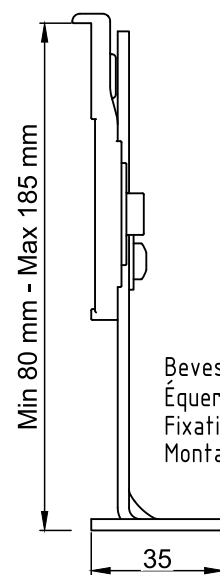
Zijgeleider 3 delen  
Coulisse 3 parties  
Side channel 3 parts  
Seitenführung 3 Teile



Onderlat  
Barre de charge  
Bottom rail  
Die Endschiene

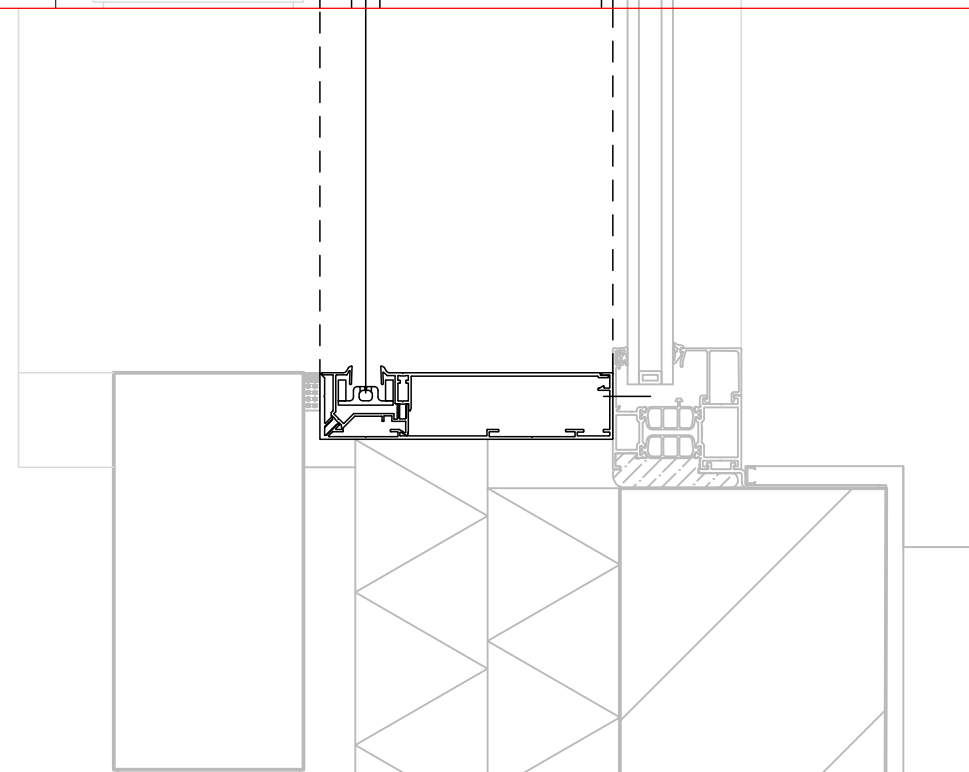


Diepe zijgeleider 3 delen Standaard  
Coulisse profonde 3 parties Standard  
Deep side channel 3 parts Standard  
Ziefe seitenführung 3 Teile Standard



Bevestigingsbeugel  
Équerre de fixation  
Fixation bracket  
Montagekonsole

Horizontale snede  
Section horizontale  
Horizontal cross section  
Horizontaler Schnitt



Montagesituatie 7B - voor het raam

Montage 7B - devant le châssis

Installation method 7B - in front of the window

Einbauweise 7B - vor dem Rahmen

Deze tekening is eigendom van NV RENSON, en mag niet gecopieerd, noch getoond worden aan derden zonder schriftelijke toestemming.



**RENSON**  
Creating healthy spaces

Industriezone "Flanders field"  
8790 Waregem (Belgium)  
Tel. 056/62.71.11 Fax. 056/60.28.51

Getekend  
CLIPP

Datum  
22/08/2023

Schaal  
1:4

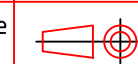
Fixscreen® 150

Versie  
2

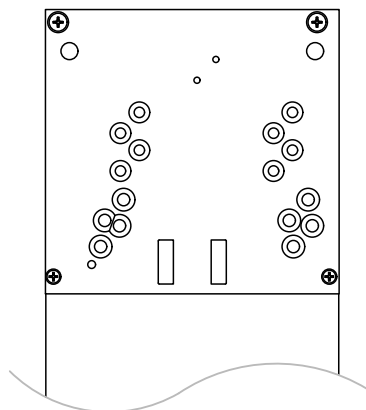
Formaat  
A3

MS7B / M7B / IM7B / EW7B

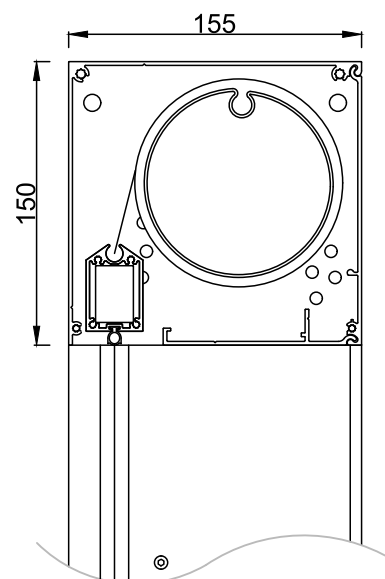
Bladzijde  
1/4



Zij aanzicht  
Vue de côté  
Side view  
Seitenansicht

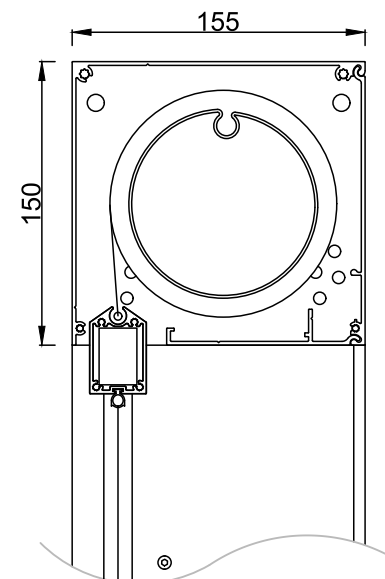


Doorsnede  
Section  
Cross section  
Querschnitt



$H \leq 2800 \text{ mm}$

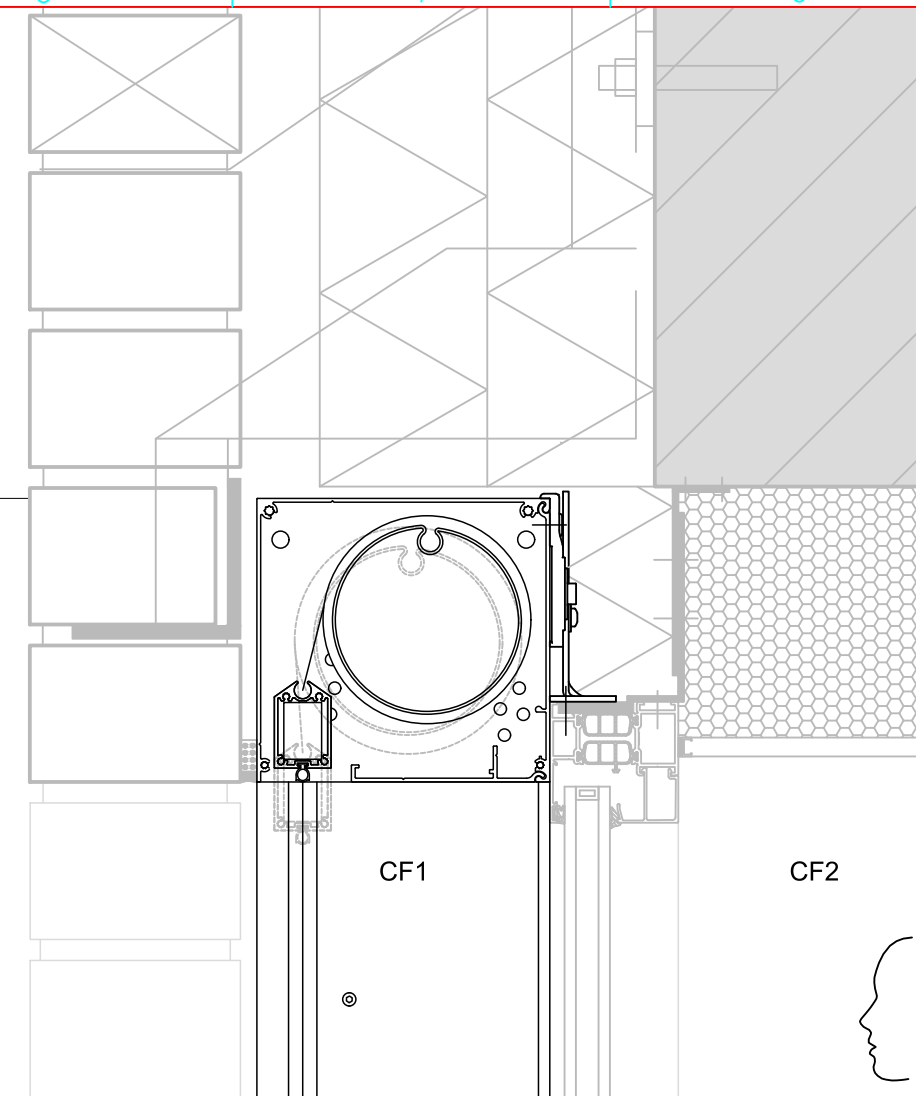
- Onderlat past volledig in de kast
- La barre de charge disparaît dans le caisson complètement
- Bottom rail disappears into the box completely
- Endschiene passt vollständig in die Kassette



$2800 \text{ mm} < H \leq 6000 \text{ mm}$

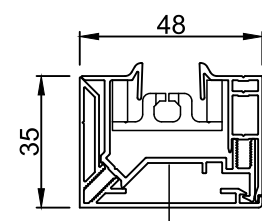
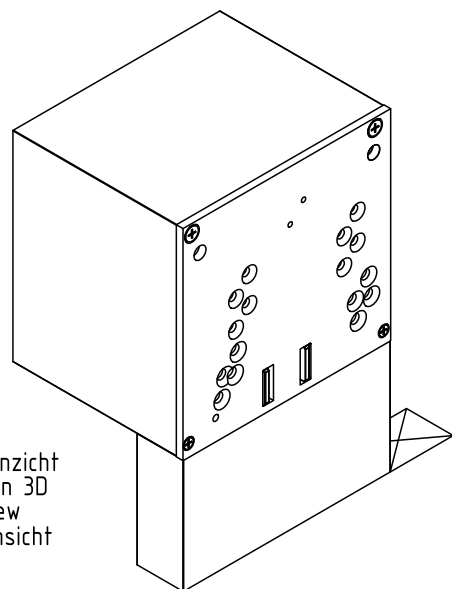
- Onderlat past gedeeltelijk in de kast
- La barre de charge disparaît dans le caisson partiellement
- Bottom rail disappears into the box partially
- Endschiene passt in die Kassette teilweise

Verticale snede  
Section verticale  
Vertical cross section  
Vertikaler Schnitt

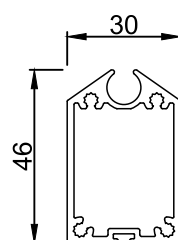


Afgewerkte hoogte  
Hauteur finie  
Finished height  
Fertige Höhe

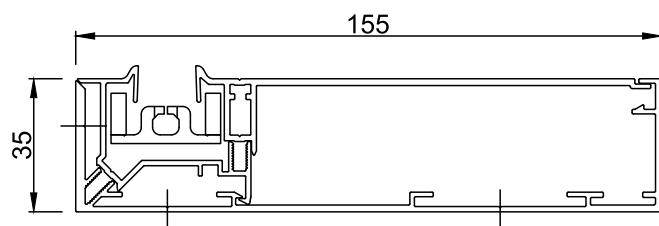
3D aanzicht  
Vue en 3D  
3D-view  
3D-Ansicht



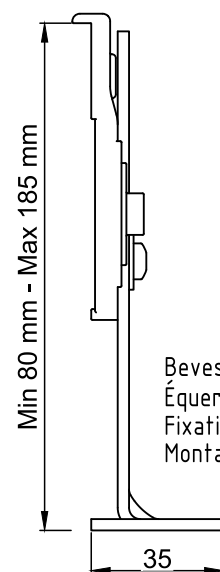
Zijgeleider 3 delen  
Coulisse 3 parties  
Side channel 3 parts  
Seitenführung 3 Teile



Onderlat  
Barre de charge  
Bottom rail  
Die Endschiene

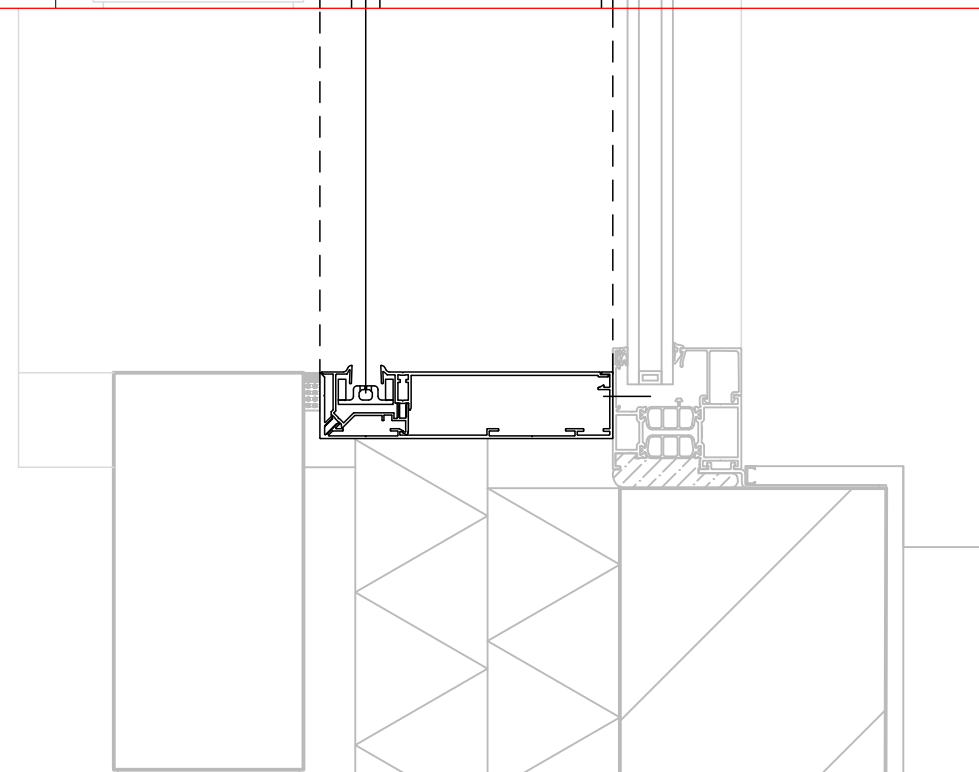


Diepe zijgeleider 3 delen Standaard  
Coulisse profonde 3 parties Standard  
Deep side channel 3 parts Standard  
Ziefe seitenführung 3 Teile Standard



Bevestigingsbeugel  
Équerre de fixation  
Fixation bracket  
Montagekonsole

Horizontale snede  
Section horizontale  
Horizontal cross section  
Horizontaler Schnitt



Montagesituatie 7B - voor het raam  
Montage 7B - devant le châssis  
Installation method 7B - in front of the window  
Einbauweise 7B - vor dem Rahmen

Deze tekening is eigendom van NV RENSON, en mag niet gecopieerd, noch getoond worden aan derden zonder schriftelijke toestemming.



**RENSON**  
Creating healthy spaces

Industriezone "Flanders field"  
8790 Waregem (Belgium)  
Tel. 056/62.71.11 Fax. 056/60.28.51

Getekend  
CLIPP

Datum  
22/08/2023

Schaal  
1:4

Fixscreen® 150

Versie  
2

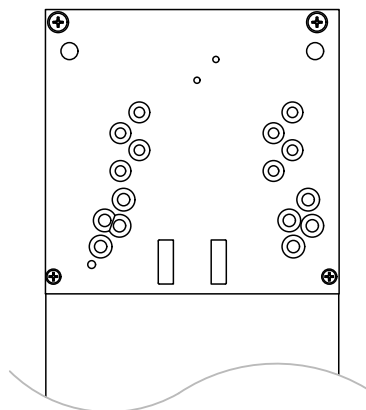
Formaat  
A3

MS7B / M7B / IM7B / EW7B

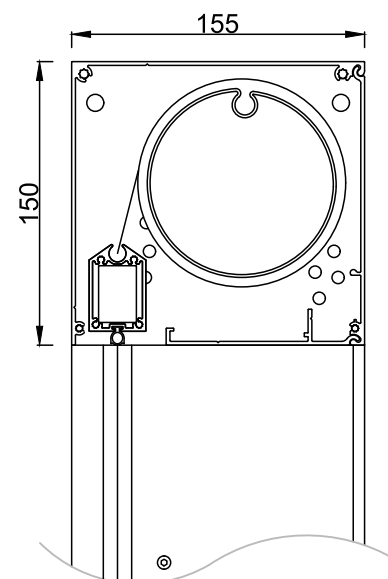
Bladzijde  
2/4



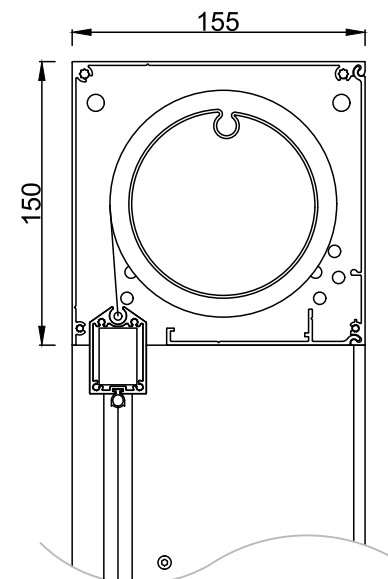
Zij aanzicht  
Vue de côté  
Side view  
Seitenansicht



Doorsnede  
Section  
Cross section  
Querschnitt



- $H \leq 2800 \text{ mm}$
- Onderlat past volledig in de kast
  - La barre de charge disparaît dans le caisson complètement
  - Bottom rail disappears into the box completely
  - Endschiene passt vollständig in die Kassette



- $2800 \text{ mm} < H \leq 6000 \text{ mm}$
- Onderlat past gedeeltelijk in de kast
  - La barre de charge disparaît dans le caisson partiellement
  - Bottom rail disappears into the box partially
  - Endschiene passt in die Kassette teilweise

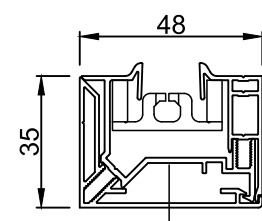
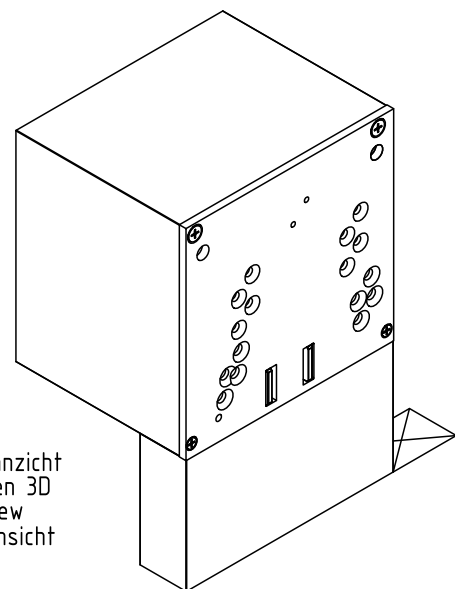
Verticale snede  
Section verticale  
Vertical cross section  
Vertikaler Schnitt

Afgewerkte hoogte  
Hauteur finie  
Finished height  
Fertige Höhe

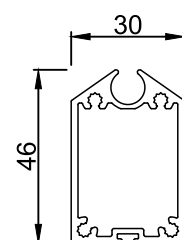
CF1

CF2

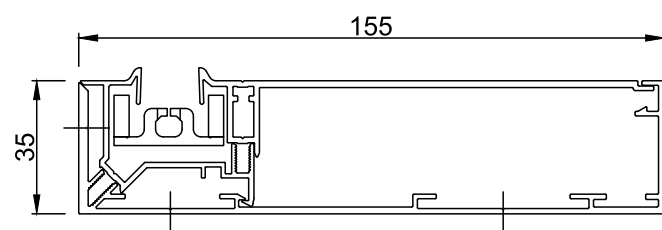
3D aanzicht  
Vue en 3D  
3D-view  
3D-Ansicht



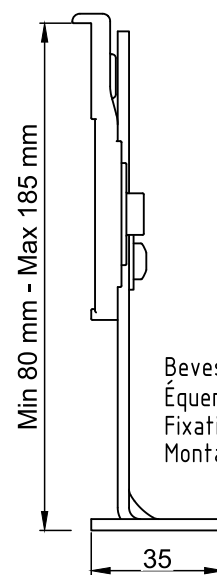
Zijgeleider 3 delen  
Coulisse 3 parties  
Side channel 3 parts  
Seitenführung 3 Teile



Onderlat  
Barre de charge  
Bottom rail  
Die Endschiene



Diepe zijgeleider 3 delen Standaard  
Coulisse profonde 3 parties Standard  
Deep side channel 3 parts Standard  
Ziefe seitenführung 3 Teile Standard



Bevestigingsbeugel  
Équerre de fixation  
Fixation bracket  
Montagekonsole

1:2

Horizontale snede  
Section horizontale  
Horizontal cross section  
Horizontaler Schnitt

Montagesituatie 7B - voor het raam  
Montage 7B - devant le châssis  
Installation method 7B - in front of the window  
Einbauweise 7B - vor dem Rahmen

Deze tekening is eigendom van NV RENSON, en mag niet gecopieerd, noch getoond worden aan derden zonder schriftelijke toestemming.



**RENSON**  
Creating healthy spaces

Industriezone "Flanders field"  
8790 Waregem (Belgium)  
Tel. 056/62.71.11 Fax. 056/60.28.51

Getekend  
CLIPP

Datum  
22/08/2023

Schaal  
1:4

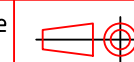
Fixscreen® 150

Versie  
2

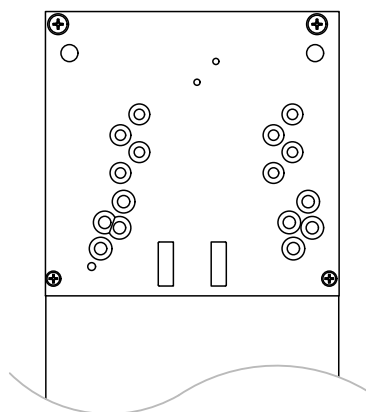
Formaat  
A3

MS7B / M7B / IM7B / EW7B

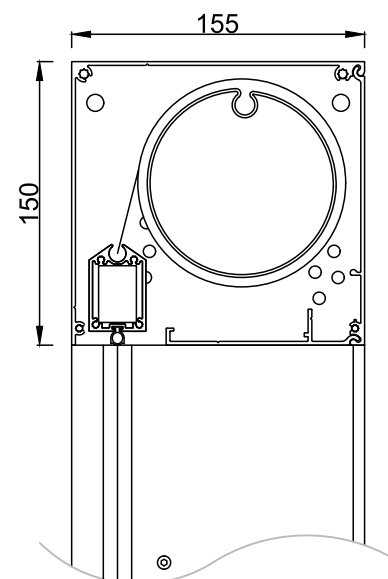
Bladzijde  
3/4



Zij aanzicht  
Vue de côté  
Side view  
Seitenansicht

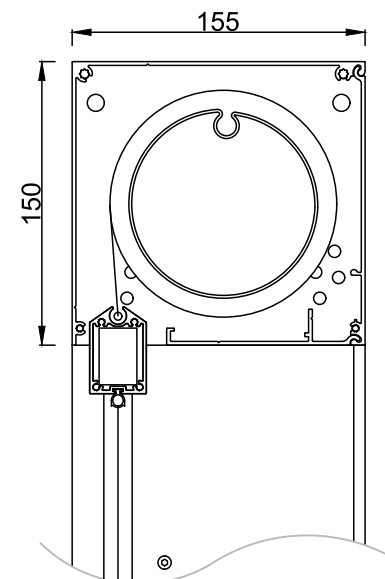


Doorsnede  
Section  
Cross section  
Querschnitt



$H \leq 2800 \text{ mm}$

- Onderlat past volledig in de kast
- La barre de charge disparaît dans le caisson complètement
- Bottom rail disappears into the box completely
- Endschiene passt vollständig in die Kassette



$2800 \text{ mm} < H \leq 6000 \text{ mm}$

- Onderlat past gedeeltelijk in de kast
- La barre de charge disparaît dans le caisson partiellement
- Bottom rail disappears into the box partially
- Endschiene passt in die Kassette teilweise

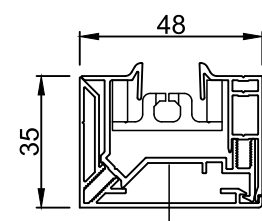
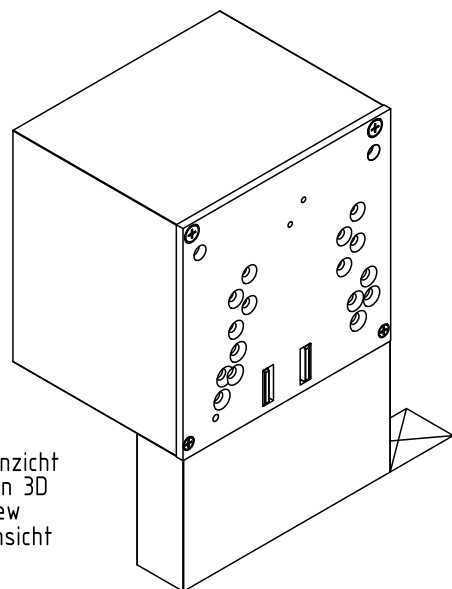
Verticale snede  
Section verticale  
Vertical cross section  
Vertikaler Schnitt

Afgewerkte hoogte  
Hauteur finie  
Finished height  
Fertige Höhe

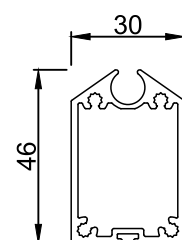
CF1

CF2

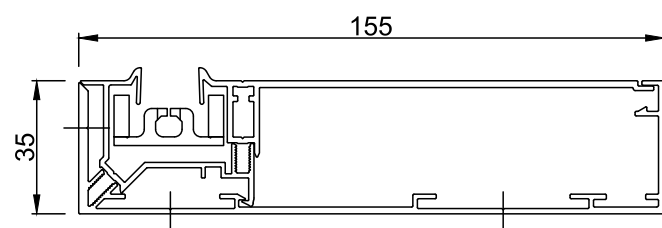
3D aanzicht  
Vue en 3D  
3D-view  
3D-Ansicht



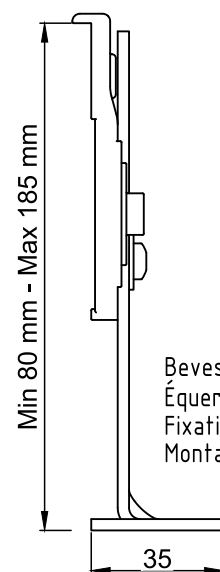
Zijgeleider 3 delen  
Coulisse 3 parties  
Side channel 3 parts  
Seitenführung 3 Teile



Onderlat  
Barre de charge  
Bottom rail  
Die Endschiene



Diepe zijgeleider 3 delen Standaard  
Coulisse profonde 3 parties Standard  
Deep side channel 3 parts Standard  
Ziefe seitenführung 3 Teile Standard



Bevestigingsbeugel  
Équerre de fixation  
Fixation bracket  
Montagekonsole

1:2

Horizontale snede  
Section horizontale  
Horizontal cross section  
Horizontaler Schnitt

Montagesituatie 7B - voor het raam  
Montage 7B - devant le châssis  
Installation method 7B - in front of the window  
Einbauweise 7B - vor dem Rahmen

Deze tekening is eigendom van NV RENSON, en mag niet gecopieerd, noch getoond worden aan derden zonder schriftelijke toestemming.



**RENSON**  
Creating healthy spaces

Industriezone "Flanders field"  
8790 Waregem (Belgium)  
Tel. 056/62.71.11 Fax. 056/60.28.51

Getekend  
CLIPP

Datum  
22/08/2023

Schaal  
1:4

Fixscreen® 150

Versie  
2

Formaat  
A3

MS7B / M7B / IM7B / EW7B

Bladzijde  
4/4

